



alston floors

ALSTON FLOORS PVT. LTD.

Armstrong[®]
FLOORING

Armstrong[®]
FLOORING



NATURAL CREATIONS[®]
Essertess[™]



www.armstrongflooring.asia



CREATIONS[®]
NATURAL
Essertess[™]
WOOD GRAIN



WO 172 Dew maple WO 173 Sunset maple



WO 172
184.15mm×1219.2mm

Dew maple



WO 173
184.15mm×1219.2mm

Sunset maple



WO 112 Light Grey Hickory



WO 112
184.15mm×1219.2mm

Light Grey Hickory



WO 171
184.15mm×1219.2mm

Snow maple



■ WO 108
184.15mm×1219.2mm

French Washed Oak



WO 170
184.15mm×1219.2mm

Silver maple



■ WO 026
184.15mm×1219.2mm

Weathered Oak/ Light



W0 000 Warm Hickory



■ W0 000
184.15mm×1219.2mm

Warm Hickory

■ Marked colors refer to design color effect, please apply color mixing to install per requirements of rendering picture



WO 103
184.15mm×1219.2mm

Drawbench Light



WO 105
184.15mm×1219.2mm

Brush Cherry



WO 104
184.15mm×1219.2mm

Reflection



WO 032
184.15mm×1219.2mm

Antique Wood/ Dark



CREATIONS[®]
NATURAL
Essertess[™]
STONE



SE 200 Fog Sand/Stone SE 206 Sandstone/Stone



SE 200
457.2mm×914.4mm 457.2mm×457.2mm

Fog Sand/Stone



SE 206
457.2mm×914.4mm 457.2mm×457.2mm

Sandstone/Stone



SE 201 Temple Black/Stone 混拼 Carpet tile



SE 201
457.2mm×914.4mm 457.2mm×457.2mm

Temple Black/Stone

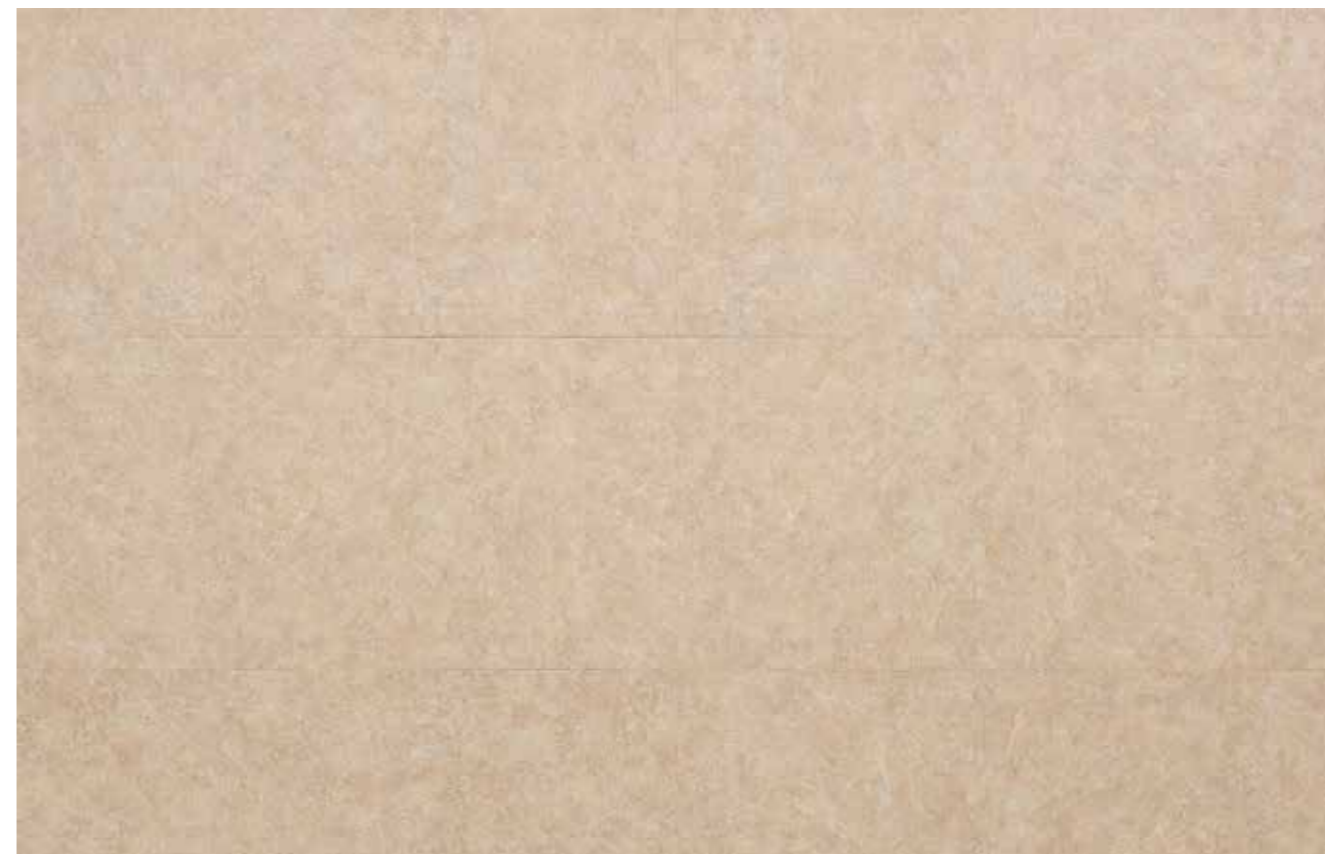


SE 204 Beige Gold/Stone SE 207 Cream Jade/Stone SE 206 Sandstone/Stone



SE 204
457.2mm×914.4mm 457.2mm×457.2mm

Beige Gold/Stone



SE 205
457.2mm×914.4mm 457.2mm×457.2mm

Citrine/Stone



SE 207
457.2mm×914.4mm 457.2mm×457.2mm

Cream Jade/Stone



SE 206
457.2mm×914.4mm 457.2mm×457.2mm

Sandstone/Stone



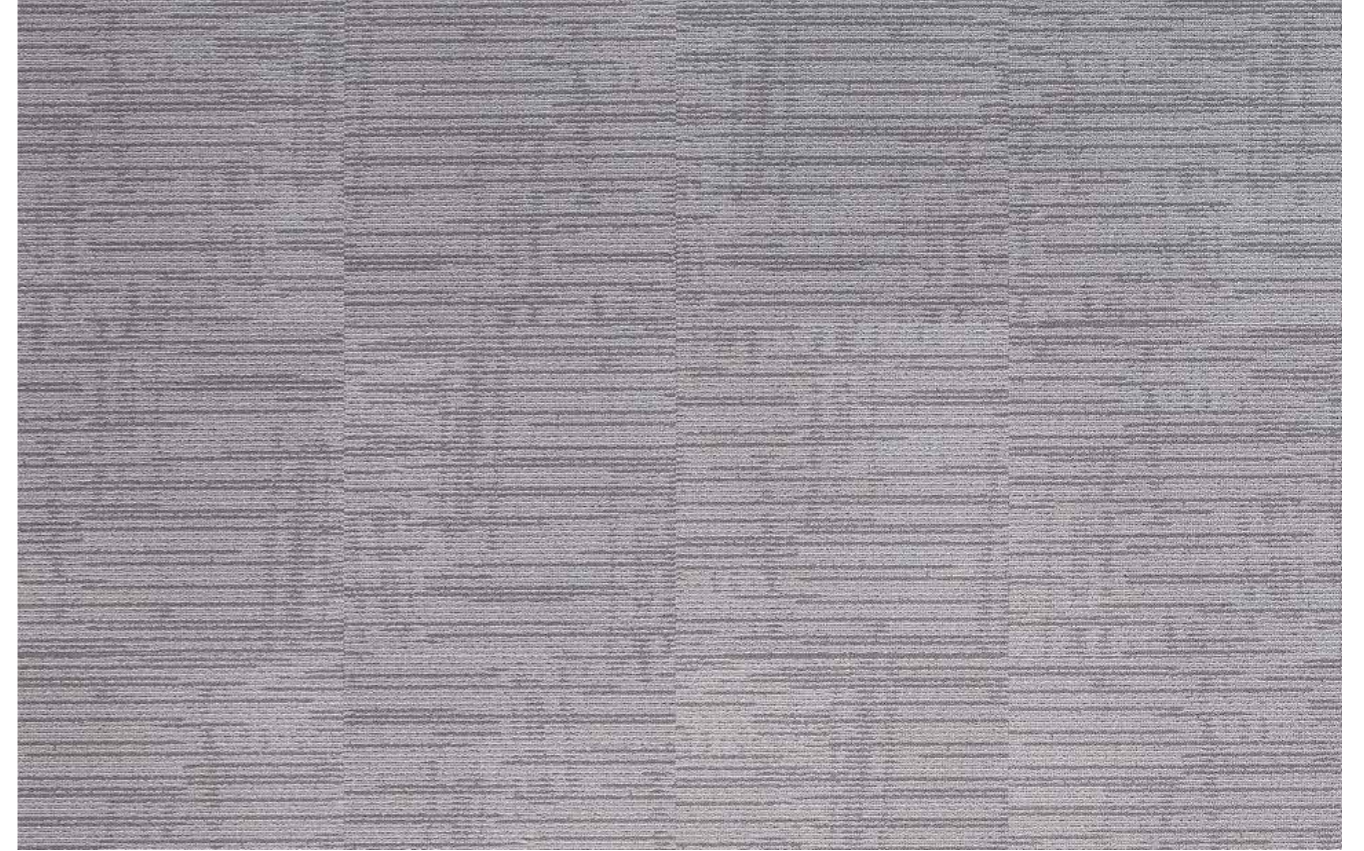
CREATIONS[®]
NATURAL

Essertess[™]

CARPET TILE



CA 619 Ambering/Carpet CA 620 Plume/Carpet



CA 620
457.2mm×914.4mm 457.2mm×457.2mm

Plume/Carpet



CA 619
457.2mm×914.4mm
457.2mm×457.2mm

Ambering/Carpet



CA 617
457.2mm×914.4mm
457.2mm×457.2mm

Tan/Carpet



CA 621
457.2mm×914.4mm
457.2mm×457.2mm

Coffee Chips/Carpet



CA 607 崂山花



CA 607
457.2mm×914.4mm 457.2mm×457.2mm

Light Coir/Carpet



CA 601
457.2mm×914.4mm
457.2mm×457.2mm

Gently Grey/Carpet



CA 606
457.2mm×914.4mm
457.2mm×457.2mm

Plow Rock/Carpet



CA 602
457.2mm×914.4mm
457.2mm×457.2mm

Peaceful/Carpet



CA 622
457.2mm×914.4mm 457.2mm×457.2mm

Amphibolite/Carpet



CA 624
457.2mm×914.4mm
457.2mm×457.2mm

Gabbro/Carpet



CA 623
457.2mm×914.4mm
457.2mm×457.2mm

Kersanite/Carpet



CA 625
457.2mm×914.4mm
457.2mm×457.2mm

Basanite/Carpet

Selling Points:

The series features wood, stone, and carpet patterns that apply to the commercial environment, with high-quality eco-friendly raw materials, and guaranteed wear resistance and stability in product use.

- Healthy and eco-friendly, no phthalate plasticisers, no heavy metals or toxic substances, high stability.
- Rich colors, different patchwork combinations to allow flexible designs, easy to install and maintain, replaceable.
- Suitable for education, retail, home, office and other scenarios.

Technical Data

Requirement	Standard	Unit	Results
Type of flooring			LVT
Pattern			Wood, stone, carpet patterns
Fire test	GB 8624	class	B1
Performance behaviour			
Tile dimensions		mm×mm	184.15×1219.2 (Wood patterns) 457.2×457.2 (Stone/carpet patterns) 457.2×914.4 (Stone/carpet patterns)
Total thickness		mm	2.0
wear layer thickness		mm	0.2
Customized thickness		mm	2.0, 2.5, 3.0,4.0,5.0 (Total thickness) 0.3,0.55 (Wear layer thickness)
Wear resistance	EN660-2	group	T
Residual indentation	GB/T 4085	mm	≤ 0.10mm
Dimension stability	GB/T 4085	%	≤ 0.25%
Heat warping degree	GB/T 4085	mm	≤ 2mm
Limit of harmful substances	GB 18586		Pass

CONTACT US

ALSTON FLOORS PVT. LTD.

Door no. 12/421, GAIL - HMT Colony Road
Behind KINFRA Substation, Kalamassery,
Kochi, Kerala – 683503.

 **+91 98957 72087**

 **mail@alstonfloors.com**

 **www.alstonfloors.com**

